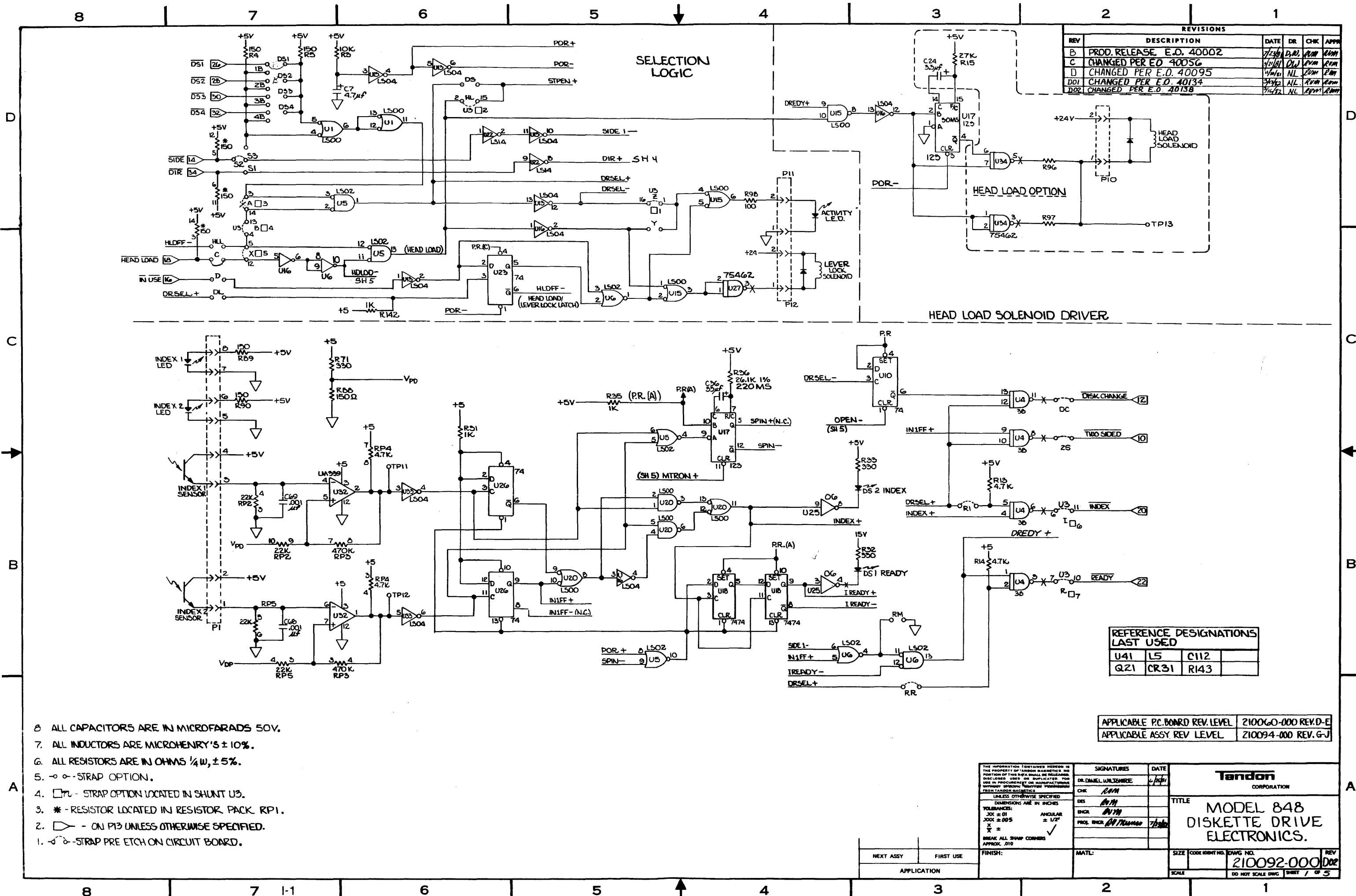
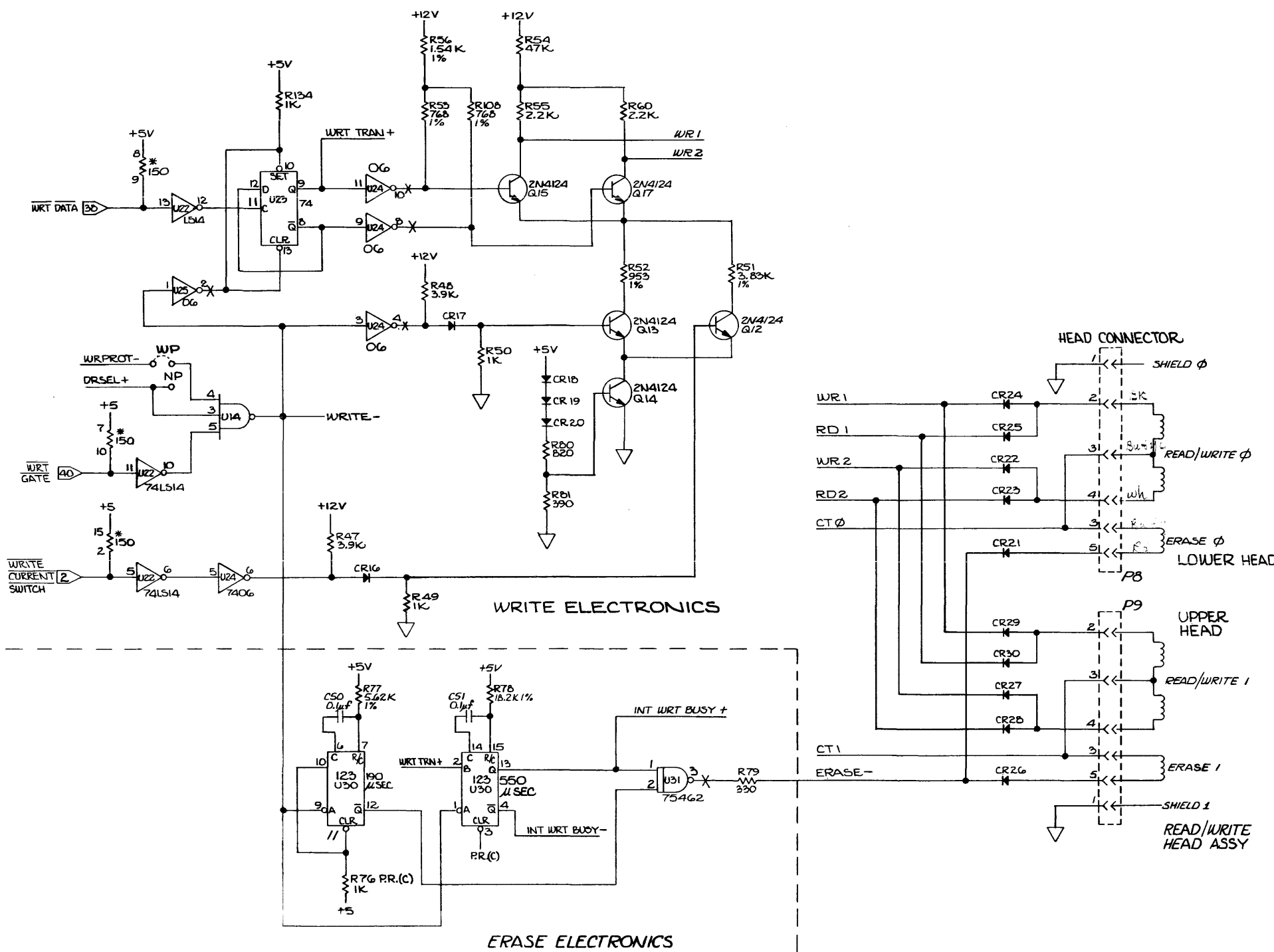


APPENDIX I

PRINTED CIRCUIT BOARD SCHEMATICS AND ASSEMBLY DRAWINGS



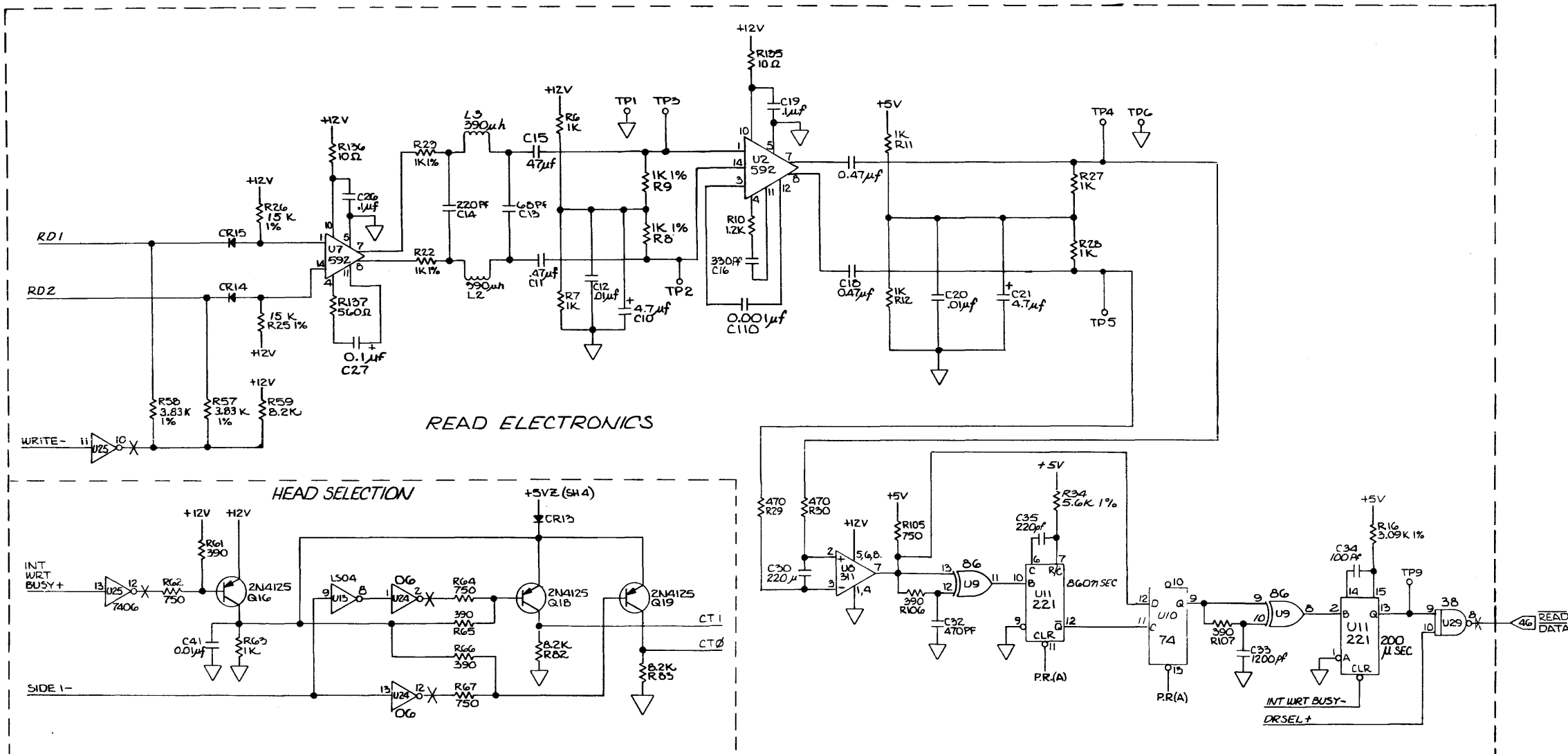
| REVISIONS | | | | | |
|-----------|-------------|------|----|-----|-----|
| REV | DESCRIPTION | DATE | DR | CHK | APP |
| E | SEE SH 1 | | | | |



1. *-RESISTOR LOCATED IN RESISTOR PACK RP1

| | | | | | |
|---|--|------------------------|--|--------|---|
| THE INFORMATION CONTAINED HEREON IS THE PROPERTY OF TANDON MAGNETICS. NO PORTION OF THIS DATA SHALL BE RELEASED, DISCLOSED, USED OR DUPLICATED FOR USE IN PROCUREMENT OR MANUFACTURE WITHOUT SPECIFIC WRITTEN PERMISSION FROM TANDON MAGNETICS. | | SIGNATURES | | DATE | Tandon CORPORATION TITLE MODEL 848 DISKETTE DRIVE ELECTRONICS SIZE CODE IDENT NO. DWG NO. REV SCALE <i>NONE</i> DO NOT SCALE DWG. SHEET 2 OF 5 |
| UNLESS OTHERWISE SPECIFIED DIMENSIONS ARE IN INCHES | | DR. WILTSHIRE | | 7/2/80 | |
| TOLERANCES: | | CHK. <i>RUM</i> | | | |
| X ± 1/2" ✓ | | DES. <i>RUM</i> | | | |
| X ± 1/4" ✓ | | ENGR. <i>RUM</i> | | | |
| X ± 1/8" ✓ | | PROJ. ENGR. <i>RUM</i> | | 7/2/80 | |
| X ± 1/16" ✓ | | | | | |
| X ± 1/32" ✓ | | | | | |
| X ± 1/64" ✓ | | | | | |
| X ± 1/128" ✓ | | | | | |
| X ± 1/256" ✓ | | | | | |
| X ± 1/512" ✓ | | | | | |
| X ± 1/1024" ✓ | | | | | |
| X ± 1/2048" ✓ | | | | | |
| X ± 1/4096" ✓ | | | | | |
| X ± 1/8192" ✓ | | | | | |
| X ± 1/16384" ✓ | | | | | |
| X ± 1/32768" ✓ | | | | | |
| X ± 1/65536" ✓ | | | | | |
| X ± 1/131072" ✓ | | | | | |
| X ± 1/262144" ✓ | | | | | |
| X ± 1/524288" ✓ | | | | | |
| X ± 1/1048576" ✓ | | | | | |
| X ± 1/2097152" ✓ | | | | | |
| X ± 1/4194304" ✓ | | | | | |
| X ± 1/8388608" ✓ | | | | | |
| X ± 1/16777216" ✓ | | | | | |
| X ± 1/33554432" ✓ | | | | | |
| X ± 1/67108864" ✓ | | | | | |
| X ± 1/134217728" ✓ | | | | | |
| X ± 1/268435456" ✓ | | | | | |
| X ± 1/536870912" ✓ | | | | | |
| X ± 1/1073741824" ✓ | | | | | |
| X ± 1/2147483648" ✓ | | | | | |
| X ± 1/4294967296" ✓ | | | | | |
| X ± 1/8589934592" ✓ | | | | | |
| X ± 1/17179869184" ✓ | | | | | |
| X ± 1/34359738368" ✓ | | | | | |
| X ± 1/68719476736" ✓ | | | | | |
| X ± 1/137438953472" ✓ | | | | | |
| X ± 1/274877906944" ✓ | | | | | |
| X ± 1/549755813888" ✓ | | | | | |
| X ± 1/1099511627776" ✓ | | | | | |
| X ± 1/2199023255552" ✓ | | | | | |
| X ± 1/4398046511104" ✓ | | | | | |
| X ± 1/8796093022208" ✓ | | | | | |
| X ± 1/17592186044416" ✓ | | | | | |
| X ± 1/35184372088832" ✓ | | | | | |
| X ± 1/70368744177664" ✓ | | | | | |
| X ± 1/140737488355328" ✓ | | | | | |
| X ± 1/281474976710656" ✓ | | | | | |
| X ± 1/562949953421312" ✓ | | | | | |
| X ± 1/1125899906842624" ✓ | | | | | |
| X ± 1/2251799813685248" ✓ | | | | | |
| X ± 1/4503599627370496" ✓ | | | | | |
| X ± 1/9007199254740992" ✓ | | | | | |
| X ± 1/18014398509481984" ✓ | | | | | |
| X ± 1/36028797018963968" ✓ | | | | | |
| X ± 1/72057594037927936" ✓ | | | | | |
| X ± 1/144115188075855872" ✓ | | | | | |
| X ± 1/288230376151711744" ✓ | | | | | |
| X ± 1/576460752303423488" ✓ | | | | | |
| X ± 1/1152921504606846976" ✓ | | | | | |
| X ± 1/2305843009213693952" ✓ | | | | | |
| X ± 1/4611686018427387904" ✓ | | | | | |
| X ± 1/9223372036854775808" ✓ | | | | | |
| X ± 1/18446744073709551616" ✓ | | | | | |
| X ± 1/36893488147419103232" ✓ | | | | | |
| X ± 1/73786976294838206464" ✓ | | | | | |
| X ± 1/147573952589676412928" ✓ | | | | | |
| X ± 1/295147905179352825856" ✓ | | | | | |
| X ± 1/590295810358705651712" ✓ | | | | | |
| X ± 1/1180591620717411303424" ✓ | | | | | |
| X ± 1/2361183241434822606848" ✓ | | | | | |
| X ± 1/4722366482869645213696" ✓ | | | | | |
| X ± 1/9444732965739290427392" ✓ | | | | | |
| X ± 1/18889465931478580854784" ✓ | | | | | |
| X ± 1/37778931862957161709568" ✓ | | | | | |
| X ± 1/75557863725914323419136" ✓ | | | | | |
| X ± 1/151115727451828646838272" ✓ | | | | | |
| X ± 1/302231454903657293676544" ✓ | | | | | |
| X ± 1/604462909807314587353088" ✓ | | | | | |
| X ± 1/1208925819614629174706176" ✓ | | | | | |
| X ± 1/2417851639229258349412352" ✓ | | | | | |
| X ± 1/4835703278458516698824704" ✓ | | | | | |
| X ± 1/9671406556917033397649408" ✓ | | | | | |
| X ± 1/19342813113834066795298816" ✓ | | | | | |
| X ± 1/38685626227668133590597632" ✓ | | | | | |
| X ± 1/77371252455336267181195264" ✓ | | | | | |
| X ± 1/154742504910672534362390528" ✓ | | | | | |
| X ± 1/309485009821345068724781056" ✓ | | | | | |
| X ± 1/618970019642690137449562112" ✓ | | | | | |
| X ± 1/1237940039285380274899124224" ✓ | | | | | |
| X ± 1/2475880078570760549798248448" ✓ | | | | | |
| X ± 1/4951760157141521099596496896" ✓ | | | | | |
| X ± 1/9903520314283042199192993792" ✓ | | | | | |
| X ± 1/19807040628566084398385987584" ✓ | | | | | |
| X ± 1/39614081257132168796771975168" ✓ | | | | | |
| X ± 1/79228162514264337593543950336" ✓ | | | | | |
| X ± 1/158456325028528675187087900672" ✓ | | | | | |
| X ± 1/316912650057057350374175801344" ✓ | | | | | |
| X ± 1/633825300114114700748351602688" ✓ | | | | | |
| X ± 1/1267650600228229401496703205376" ✓ | | | | | |
| X ± 1/2535301200456458802993406410752" ✓ | | | | | |
| X ± 1/5070602400912917605986812821504" ✓ | | | | | |
| X ± 1/10141204801825835211973625643008" ✓ | | | | | |
| X ± 1/20282409603651670423947251286016" ✓ | | | | | |
| X ± 1/40564819207303340847894502572032" ✓ | | | | | |
| X ± 1/81129638414606681695789005144064" ✓ | | | | | |
| X ± 1/162259276829213363391578010288128" ✓ | | | | | |
| X ± 1/324518553658426726783156020576256" ✓ | | | | | |
| X ± 1/649037107316853453566312041152512" ✓ | | | | | |
| X ± 1/1298074214633706907132624082305024" ✓ | | | | | |
| X ± 1/2596148429267413814265248164610048" ✓ | | | | | |
| X ± 1/5192296858534827628530496329220096" ✓ | | | | | |
| X ± 1/10384593717069655257060992658440192" ✓ | | | | | |
| X ± 1/20769187434139310514121985316880384" ✓ | | | | | |
| X ± 1/41538374868278621028243970633760768" ✓ | | | | | |
| X ± 1/83076749736557242056487941267521536" ✓ | | | | | |
| X ± 1/166153499473114484112975882535043072" ✓ | | | | | |
| X ± 1/332306998946228968225951765070086144" ✓ | | | | | |
| X ± 1/664613997892457936451903530140172288" ✓ | | | | | |
| X ± 1/1329227995784915872903807060280344576" ✓ | | | | | |
| X ± 1/2658455991569831745807614120560689152" ✓ | | | | | |
| X ± 1/5316911983139663491615228241121378304" ✓ | | | | | |
| X ± 1/10633823966279326983230456482242756608" ✓ | | | | | |
| X ± 1/21267647932558653966460912964485513216" ✓ | | | | | |
| X ± 1/42535295865117307932921825928971026432" ✓ | | | | | |
| X ± 1/85070591730234615865843651857942052864" ✓ | | | | | |
| X ± 1/170141183460469231731687303715884105728" ✓ | | | | | |
| X ± 1/340282366920938463463374607431768211456" ✓ | | | | | |
| X ± 1/680564733841876926926749214863536422912" ✓ | | | | | |
| X ± 1/1361129467683753853853498429727072845824" ✓ | | | | | |
| X ± 1/2722258935367507707706996859454145691648" ✓ | | | | | |
| X ± 1/5444517870735015415413993718908291383296" ✓ | | | | | |
| X ± 1/10889035741470030830827987437816582766592" ✓ | | | | | |
| X ± 1/21778071482940061661655974875633165533184" ✓ | | | | | |
| X ± 1/43556142965880123323311949751266331066368" ✓ | | | | | |
| X ± 1/87112285931760246646623899502532662132736" ✓ | | | | | |
| X ± 1/174224571863520493293247799005065244264512" ✓ | | | | | |
| X ± 1/348449143727040986586495598010130488529024" ✓ | | | | | |
| X ± 1/696898287454081973172991196020260977058048" ✓ | | | | | |
| X ± 1/1393796574908163946345982392040521954116096" ✓ | | | | | |
| X ± 1/2787593149816327892691964784081043908232192" ✓ | | | | | |
| X ± 1/5575186299632655785383929568162087816464384" ✓ | | | | | |
| X ± 1/11150372599265311570767859136324175632928768" ✓ | | | | | |
| X ± 1/22300745198530623141535718272648351265857536" ✓ | | | | | |
| X ± 1/44601490397061246283071436545296702531715072" ✓ | | | | | |
| X ± 1/89202980794122492566142873090593405063430144" ✓ | | | | | |
| X ± 1/178405961588244985132285746181186810126860288" ✓ | | | | | |
| X ± 1/356811923176489970264571492362373620253720576" ✓ | | | | | |
| X ± 1/713623846352979940529142984724747240507441152" ✓ | | | | | |
| X ± 1/1427247692705959881058285969449494481014882304" ✓ | | | | | |
| X ± 1/2854495385411919762116571938898988962029764608" ✓ | | | | | |
| X ± 1/5708990770823839524233143877797977924059529216" ✓ | | | | | |
| X ± 1/11417981541647679048466287755595955848119058432" ✓ | | | | | |
| X ± 1/22835963083295358096932575511191911696238116864" ✓ | | | | | |
| X ± 1/45671926166590716193865151022383823392476233728" ✓ | | | | | |
| X ± 1/91343852333181432387730302044767646784952467456" ✓ | | | | | |
| X ± 1/182687704666362864775460604089535293569904934912" ✓ | | | | | |
| X ± 1/365375409332725729550921208179070587139809869824" ✓ | | | | | |
| X ± 1/730750818665451459101842416358141174279619739648" ✓ | | | | | |
| X ± 1/1461501637330902918203684832716282348559239479296" ✓ | | | | | |
| X ± 1/2923003274661805836407369665432564697118478958592" ✓ | | | | | |
| X ± 1/5846006549323611672814739330865129394236957917184" ✓ | | | | | |
| X ± 1/11692013098647223345629478661730258788473 | | | | | |

| REVISIONS | | | | | |
|-----------|-------------|------|----|-----|-----|
| REV | DESCRIPTION | DATE | DR | CHK | APP |
| E | SEE SH 1 | | | | |



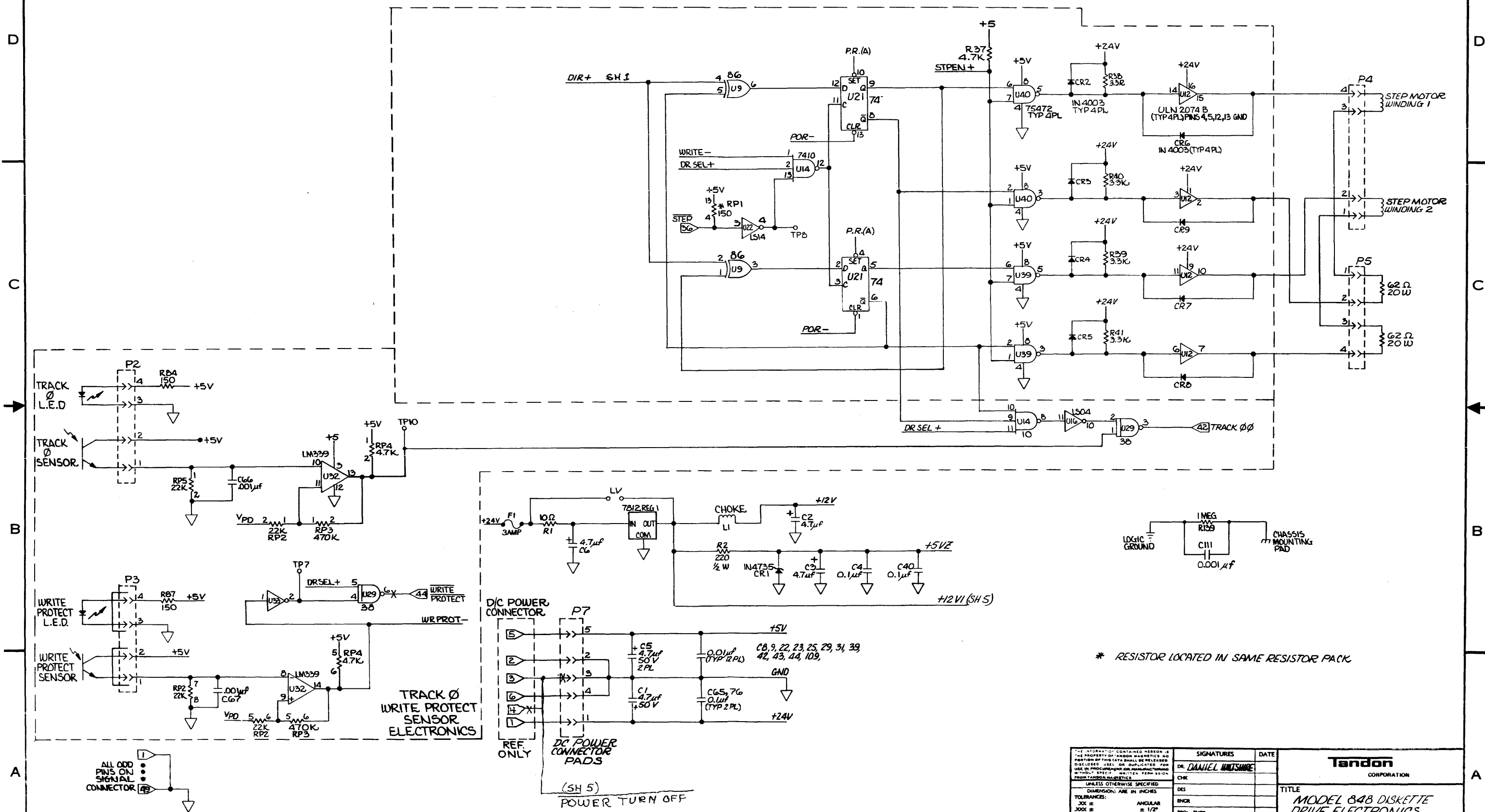
| | | | | |
|--|--|--------------------------------|--|------|
| THE INFORMATION CONTAINED HEREON IS THE PROPERTY OF TANDON MAGNETICS. NO PORTION OF THIS DATA SHALL BE RELEASED, DISCLOSED, USED OR DUPLICATED FOR USE IN ANY MANNER WITHOUT THE WRITTEN PERMISSION OF TANDON MAGNETICS. | | SIGNATURES | | DATE |
| UNLESS OTHERWISE SPECIFIED DIMENSIONS ARE IN INCHES | | DESIGNER: <i>DAWILSHIRE, D</i> | | |
| TOLERANCES: | | CHK: <i>MM</i> | | |
| XX ± | | DES: <i>MM</i> | | |
| XXX ± | | ENGR: <i>MM</i> | | |
| X ± | | PROJ. ENGR: <i>MM</i> | | |
| X ± | | | | |
| BREAK ALL SHARP CORNERS APPROX. 0.10 | | | | |
| NEXT ASSY | | FIRST USE | | |
| APPLICATION | | | | |
| FINISH: | | MATERIAL: | | |
| SIZE: <i>D</i> | | CODE IDENT NO.: | | |
| SCALE: <i>~</i> | | DWG NO.: | | |
| | | REV: <i>D02</i> | | |
| | | DO NOT SCALE DWG | | |
| | | SHEET 3 OF 5 | | |

Tandon
CORPORATION

**MODEL 848 DISKETTE
DRIVE ELECTRONICS**

210092-000

| REVISIONS | | | | | |
|-----------|-------------|------|----|-----|-----|
| REV | DESCRIPTION | DATE | DR | CHK | APP |
| E | SEE SHEET 1 | | | | |



* RESISTOR LOCATED IN SAME RESISTOR PACK

| | | | | | | | |
|---|--|---|--|--|--|---|--|
| THE INFORMATION CONTAINED HEREON IS THE PROPERTY OF RANDON MAGNETICS. NO PORTION OF THIS DATA SHALL BE RELEASED, DISCLOSED, USED, OR DUPLICATED FOR USE IN PRODUCING OR REPRODUCING "RANDOM" WITHOUT SPECIFIC WRITTEN PERMISSION FROM RANDON MAGNETICS. | | DIMENSIONS ARE IN INCHES TOLERANCES: JOG ± .005 JOG ± .010 X ± .010 X ± .010 BREAK ALL SHARP CORNERS APPROX. .010 | | SIGNATURES DR. DANIEL HUNTSMAN DES ENGR PROJ. ENGR | | DATE TITLE MODEL 848 DISKETTE DRIVE ELECTRONICS | |
| FINISH: NEXT ASSY FIRST USE APPLICATION | | MATL: SCALE | | SIZE CODE IDENT NO. DWG NO. 210092-000 | | REV DO NOT SCALE DWG SHEET 4 OF 5 | |

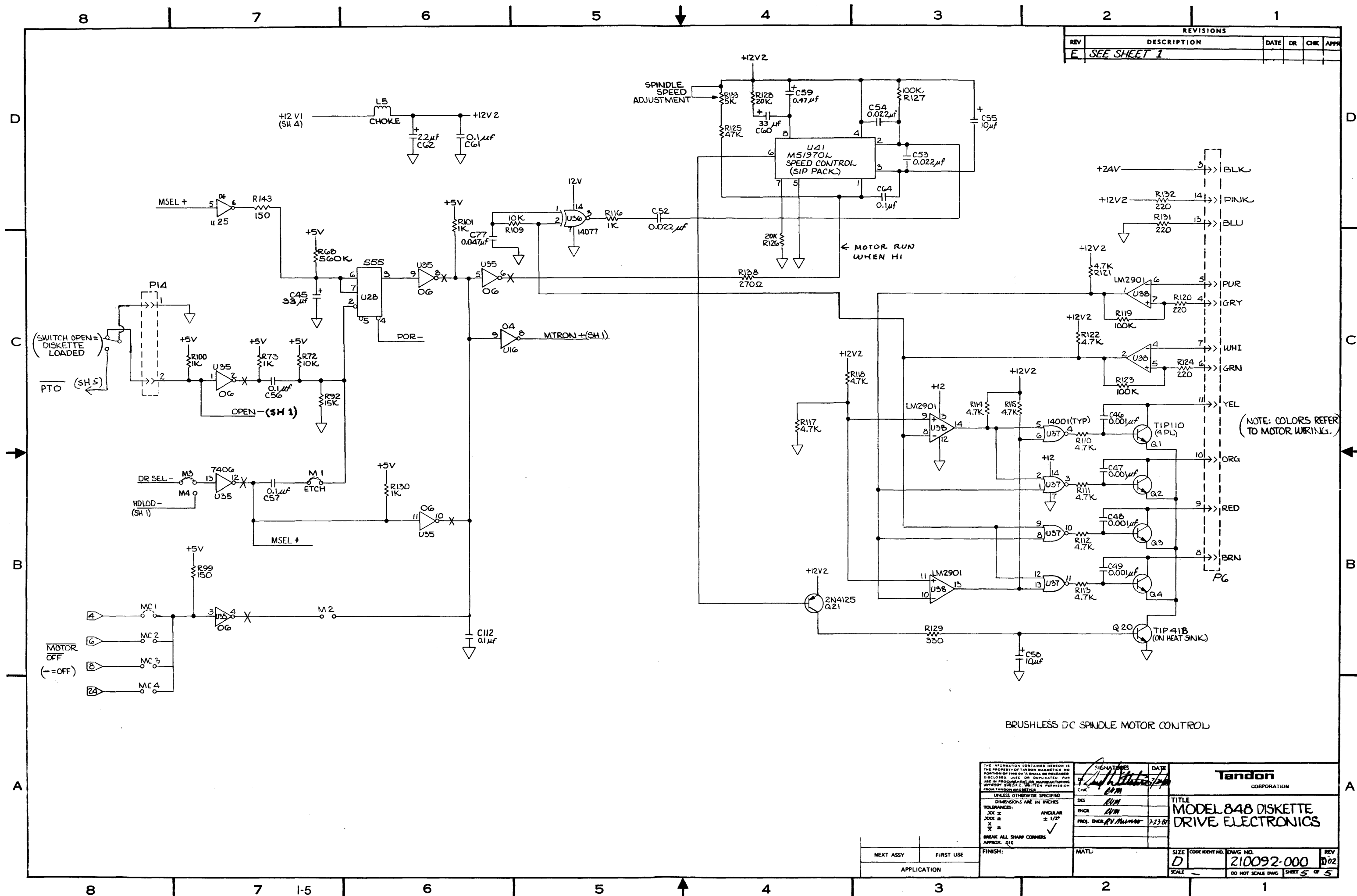
Tandon CORPORATION

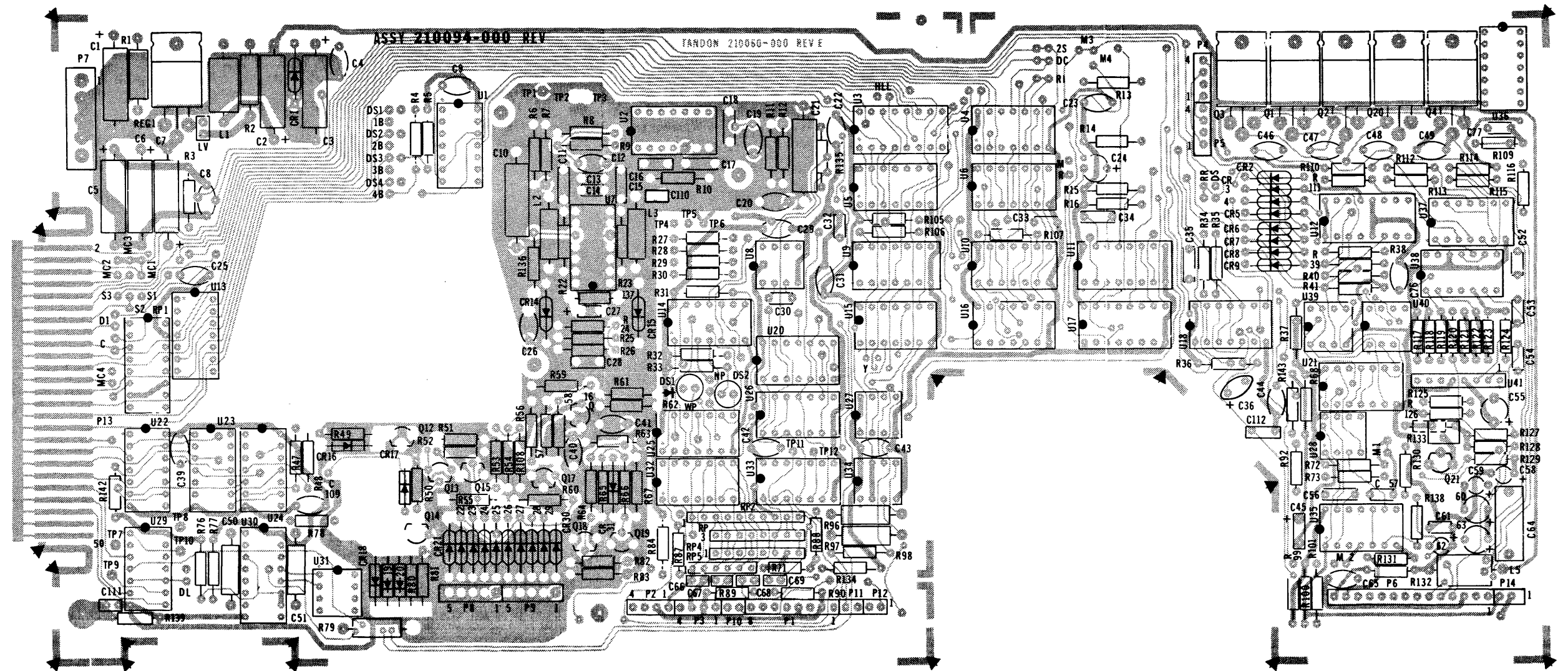
MODEL 848 DISKETTE DRIVE ELECTRONICS

210092-000

Do2

4 OF 5





APPENDIX II

RECOMMENDED SPARE PARTS LIST

PARTS AND SUBASSEMBLIES

| <u>Part</u> | <u>Part Number</u> |
|-----------------------------------|--------------------|
| Drive Belt | 210062-000 |
| Drive Motor | 210061-000 |
| Circuit Board | 210094-000 |
| Cone Assembly | 210085-000 |
| Diskette Lever | 210084-000 |
| Bridge Assembly | 210086-000 |
| Bezel | 210011-000 |
| Activity L. E. D. (Front Panel) | 210081-000 |
| Load Arm Assembly | 210089-000 |
| Track 00 Sensor Assembly | 210080-000 |
| Write Protect Sensor Assembly | 210079-000 |
| Door Open Switch Assembly | 210083-000 |
| Index Sensor Assembly | 210075-000 |
| Diskette Ejector Assembly | 210124-000 |
| Head Carriage Assembly: | |
| Single-Sided Recording | 210065-001 |
| Double-Sided Recording | 210065-002 |
| Stepper Motor (Mounting) Assembly | 210090-000 |
| Stepper Band | 210112-000 |
| Load (Power) Resistors | 210076-000 |
| Diskette Lever Lock | 210082-000 |
| Ejector Spring | 210036-000 |
| Load Arm Spring | 210122-000 |

Note

All components are standard commercial parts purchased to original equipment manufacturer's specifications.

OEM OPERATING AND SERVICE MANUAL, TM848-1 AND TM848-2 THINLINE™ DISK DRIVES, 48 TPI, TANDON P/N 179031-001

ALIGNMENT DISKETTE

Recommended: Dysan 800680, Model Number 360/2A

